

Spirit Real Sense Realm While Dealing with Beasts - Workshop 1

The Lord is giving us specific points from which to seek Him and to journal.

1. Death is a state of being. Not a thought or knowledge.



Ephesians 2:5

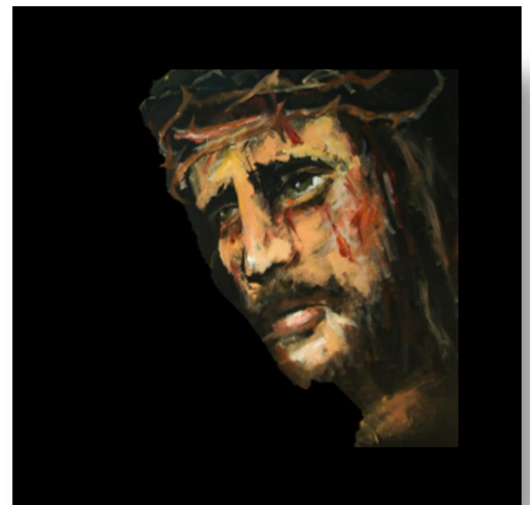
Romans 5:12

1 Corinthians 15:22

2. Self-awareness is now our way.

I see me, not Jesus.

(Genesis 3:6-7)



Don't eat from that tree—you will **SURELY DIE!**

You **won't** surely die—you'll be wise! You'll be like God!

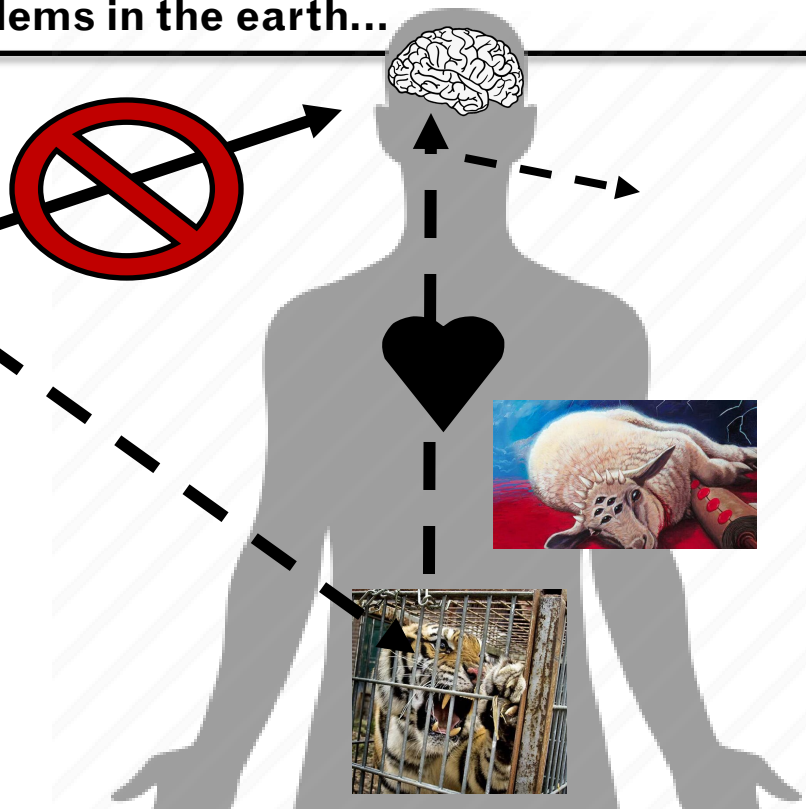
TM Trademark: self-exaltation

3. What is going on in the garden of our heart? Who is the source? (Genesis 3:4-5)

4. What are our eyes opened to when we eat from the tree of **KNOWING** by the senses and judging by the senses? **Not life. Not the slaughtered Lamb. We see us, issues, others, injustice, problems in the earth...**

5. We are moved *deep within* by this knowledge.

Not in our brain. When we **PAR-TAKE** of that "knowledge" or "information" it moves us deep inside, proving it is more... *it is death in us*. When someone hurts you, slanders you, betrays you...does it only effect your thoughts? **NO**. It produces thoughts, but it goes deep and comes from deep. **NATURE** is stirred and responds from deep within.



INTERACTIVE LAB - WORKSHOP #1

1. Read Genesis Chapters Two and Three

THOUGHTS AND HEART REQUESTS TO YOUR FATHER...

JOURNAL THESE

⇒ “If you eat you will SURELY DIE”. {Gen. 2:17}

⇒ What does that look like in my daily life?

⇒ Am I personally convinced that I will SURELY die when I eat from that tree?

⇒ What is death experientially like when it is my STATE OF BEING?

Death Partaken of

Death in action in the inward parts

Death unleashed through the beast

⇒ What are our “eyes opened to”

⇒ How does what we see “exalt us” in a spirit of the enemy?

Let's Pray!

Practical Lab #1

Pair off in teams of two.

Each team will improv with an “unjust” situation.

We will do the exercise twice with a “role reversal” on the second time so each person gets a chance to be the accuser and the accused.

****Take a moment to consider a situation
where someone is treating you evil.***

Examples:

A Boss is firing you for no reason.

Someone ripped you off for thousands of dollars

A friend turned on you and broke your heart.

A husband or wife will not forgive or says hurtful untrue things

Someone takes advantage of your kindness

A leader has a wrong spirit towards you

Before we analyze anything... just play it out.

*Try to notice the things that are “going off” inside of
you during the exercise.*

The Breakdown

- 1) The information and situation is presented to us.
- 2) It touches our senses. It affects our soul.
- 3) WE FEEL IT HIT *INSIDE* IN A BUNCH OF WAYS>

(write some down)

Shame

Rejection

Hurt - Painful Hurt

Injustice

Personal identity

Need for acceptance / love

THESE ARE NOT INFORMATION THOUGHTS

THESE ARE THINGS OF THE INWARD PARTS

Feel the waters RISE WITHIN...

4) TIME TO CHOOSE!



What happens in the TIME OF CHOOSING?

Genesis 3:6

“And when the **woman (out from man)** saw that
the tree was good **for FOOD,**

And that is was PLEASANT TO THE EYES...

And DESIRED to make one WISE

SHE TOOK

She did **EAT”**.

GAME ON...

DEATH ON THE INSIDE